

# W+D Halm *i*-Jet 2

Four+ Color High-Speed  
Inkjet Envelope Press



**W+D**

**Halm *i*-Jet 2**

**W+D**

# The Four+ Color High-Speed Inkjet Envelope Press

The **W+D Halm i-Jet 2** enables high-quality digital printing in a resolution of 1600 x 1375 dpi for the printing of envelopes and pockets. The high print quality and the possibility of quick and easy format changes make it the ideal machine for small and medium runs ranging from a couple to well over 50,000 envelopes. With variable data capability every full color image can be different and a job change on the same stock can be made without stopping the press, truly zero set-up at full speed.

Besides the high-resolution print head, the patent-pending, servo-driven transport system, which takes the envelopes from the alignment station onto a vacuum belt, ensures the highest print quality. This ensures that the envelopes are precisely positioned and transported to the print head. The result is precise, sharp-edged printing, even with the smallest 4-color-resolved fonts, right up to the very edge of the envelope.



## Advantages of inkjet overprint for short to medium runs

- / 32,000 DL/#10 envelopes/hour
- / Time tested, industry proven Halm Dual Feeder (envelope feeder) for quick and easy format changeover
- / High image resolution of up to 1600 x 1375 dpi even at maximum printing speed
- / Inkjet printing does not show any dot gain or color shift printing over seam lines or flaps - the printed image is consistent on full coverage copy
- / Printing of embossed papers without loss of quality
- / Significantly shorter changeover times compared to the changeover times on offset presses
- / Easy printing of window envelopes with standard films (no expensive laser-resistant film required!)
- / Reduced job costs compared to offset and other digital devices for motifs with moderate ink consumption (company logos, product advertising, etc.) for print runs of well over 50,000 pieces
- / Four separate standard CMYK Memjet inkjet print heads
- / A 5th special color is optionally available
- / Minimal waste, even with 4-color halftone printing
- / Paper thicknesses from 0.1 mm to 0.8 mm (.004" to .032") can be processed
- / Intelligent order tracking. Own order descriptions and PMS & Customer Colors can be saved by job or as a global custom color change
- / Order data can be used throughout. Storing, archiving and recalling of the stored settings guarantees the highest repeat accuracy even with regard to color fidelity reproductions.



RIP, data transfer and print head control

### Extremely powerful RIP

In combination with the installed computing power and a separate RIP PC, Navigator offers one of the fastest professional RIPs available for Memjet devices based on the Harlequin Rip. This means that the maximum print speed can also be called up for complex, high-resolution variable print jobs.

### Ink supply

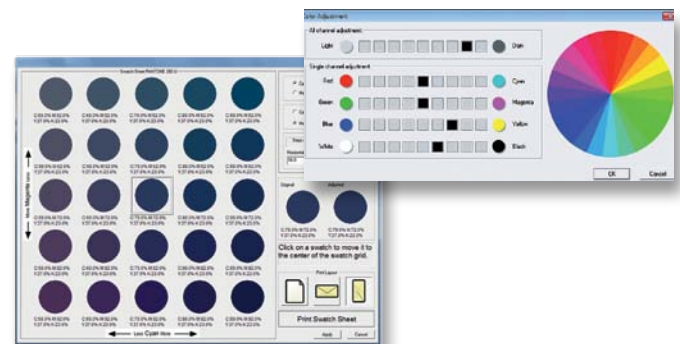
The ink is supplied by four 10-liter bladder containers (CMYK). These are housed in a pull-out under the product transport and allow the ink containers to be changed without interruption during printing. A small ink reservoir supplies the print heads during the change process.



Ink supply

### Simple and precise color management

The integrated color management software allows the selection of different ICC profiles and provides access to Pantone color libraries. In addition, the software offers further support for the display and color matching of a special color. Color tables facilitate color matching, provide a preview of the expected color result and thus considerably shorten the setting process.



## Technical specification

Type		W+D Halm i-Jet 2	
Maximum output	products/h	up to 32,000	
Paper weight		60 – 200 g/m <sup>2</sup> (16 – 53 lb.)	
Paper thickness		0.1 – 0.8 mm (0.004 – 0.032")	
Size range:		min. 90 mm (3 17/32") x 100 mm (3 15/16") – max. 330 mm (13") x 330 mm (13")	
Print width		max. 220 mm (8 21/32")	
Atmospheric pressure		70 kPa – 106 kPa	
Temperature range		15° C – 35° C (59° F – 95° F)	
Relative humidity range		20 % – 80 % RH	
Dimensions and weight	Length x Width x Height	6,250 mm x 1,960 mm x 1,940 mm (20,5 ft x 6,4 ft x 6,3 ft)	
	Net weight	1,500 kg (3,225 lb)	
Connected load	Base machine 400 V	22 kVA	
	Print System	1.6 kVA	
Noise emission	(EN 13032)	85 dB (A)	

Machine prepared with 10 m cable and plug to connect to a CEE socket 32A/400V

All performance data published refers to the production of a defined reference product under certain circumstances reflecting a possible practice of use. The performances achieved in practice depend on a multitude of parameters which are beyond our control. This includes, amongst other factors, the condition of the raw materials to be processed, the shapes of the products, the air humidity and the ambient temperature. W+D reserves the right to make design changes and changes to the performance values.



## W+D Locations

### Winkler+Dünnebier GmbH

Sohler Weg 65  
56564 Neuwied · Germany  
t. +49 2631 840 · f. +49 2631 84577  
info@w-d.de

### Winkler+Dünnebier GmbH

Location Bad Oeynhausen  
Valdorfer Straße 3  
32545 Bad Oeynhausen · Germany  
t. +49 5731 7440 · f. +49 5731 744199  
info.ins@w-d.de

### W+D North America Inc.

11300 West 80<sup>th</sup> Street  
Lenexa, KS 66214 · USA  
t. +1 913 4929880 · f. +1 913 4920691  
info@wdnorthamerica.com

### W+D North America Inc.

899 Plank Road  
Duncansville, PA 16635 · USA  
t. +1 814 6955521 · f. +1 814 6950860  
info@wdnorthamerica.com

### W+D Asia Pacific Sdn. Bhd

(Co No: 762144A)  
No: 860, 8th Floor, Block A2  
Leisure Commerce Square  
No: 9, Jalan PJS 8/9, 46150 Petaling Jaya  
Selangor · Malaysia  
t. +60 3 78654883 · f. +60 3 78654882  
info@w-d.com.my

### POEM PreOwnedEnvelopeMachines GmbH

Sohler Weg 70  
56564 Neuwied · Germany  
t. +49 2631 345386 · f. +49 2631 946103  
info.poem@w-d.de · w-d-poem.de

### BICMA Hygiene Technologie GmbH

Basaltweg 3  
56727 Mayen · Germany  
t. +49 2651 942940 · f. +49 2651 9429494  
mail@bicma.com · bicma.com

